



# New UtilityScan Accessory to Enhance Utility Locating

# LineTrac™

[www.geophysical.com](http://www.geophysical.com)

GSSI is pleased to announce LineTrac™, an accessory to our UtilityScan systems employing either the DF or HS antennas. LineTrac adds the ability to detect AC power and induced RF energy present in buried utilities.

Locating specific pipes and cables in large underground networks can be very complex. Ground conditions resulting from varying soil conditions can make the job more difficult and time consuming when relying on any one detection method. GSSI recognizes that ground penetrating radar (GPR) is not the only tool for the job and has developed an accessory that combines GPR data with a radio detection sensor.

The most important requirements for utility locators are ease-of-use, accuracy and reliability. The combination of UtilityScan and LineTrac addresses these needs with features that deliver accurate, dependable and repeatable performance.

LineTrac employs a three-axis 50/60 Hz magnetometer that is used to locate powered and non-powered utilities. LineTrac detects extremely low amplitude AC signals associated with difficult to locate utilities.

## Features

LineTrac includes a number of features to easily identify target utilities, including:

- Easy integration with GSSI UtilityScan systems with digital antennas
- Seamless data fusion with GPR data
- Aids in target discrimination
- Designed to work with existing radio detection transmitters
- User selectable Frequency Mode or Power Mode options
- 20 Hz to 50 KHz active frequency bandwidth
- Rugged, IP-65 rated enclosure

## Compatible Systems

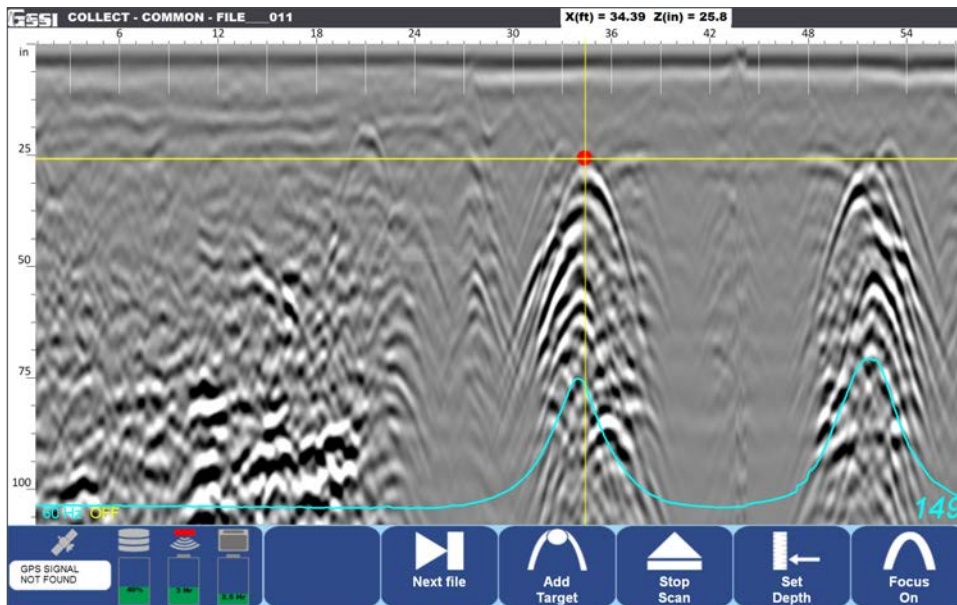
- UtilityScan Pro
- UtilityScan DF
- UtilityScan HS



Shown with 350 HS antenna



# LineTrac Data



## Power Mode

Data illustrates two power lines entering a large commercial building.

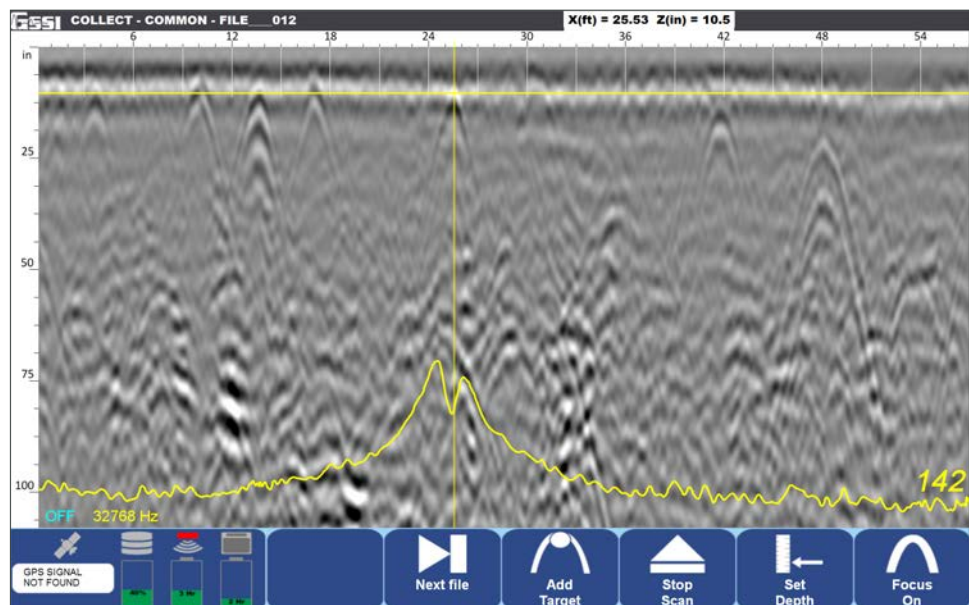
Data collected with:  
UtilityScan HS

## Frequency Mode

Data illustrates a small electrical conduit buried among multiple tree roots.

Crosshairs indicates position of conduit.

Data collected with:  
UtilityScan HS



## Antenna Compatibility

Models: 300/800 DF and 350 HS

## Survey Cart Compatibility

Models: 625, 653, 654, 655

## Specifications

Power Mode Frequencies	50/60 Hz
Frequency Mode Presets	1, 8, 16, 33 KHz
User-selectable Frequencies	20 Hz to 50 KHz
Ingress Protection	IP-65
Compliance	FCC, RSS, RoHS, CE
Operating Temperature	-20°C to 40°C (14°F to 122°F)
Warranty	2 years

[sales@geophysical.com](mailto:sales@geophysical.com)

40 Simon Street • Nashua, NH 03060-3075  
Tel: 603.893.1109 • Toll Free: 800.524.3011 • Fax: 603.889.3984

Geophysical Survey Systems, Inc.

Copyright © 2016 All Rights Reserved  
Geophysical Survey Systems, Inc.  
05.20.2016